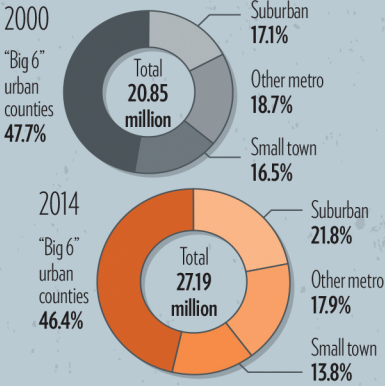
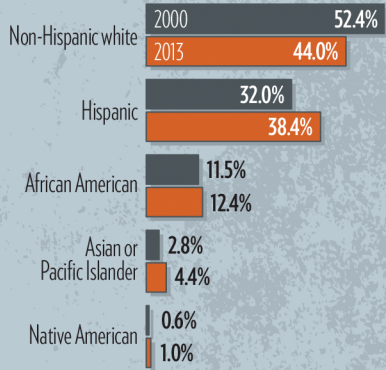


## Population, by county type



## Ethnic breakdown



## Number of Texans experiencing extreme or exceptional drought during the first week of August

2000 **0**  
2014 **3,548,341**

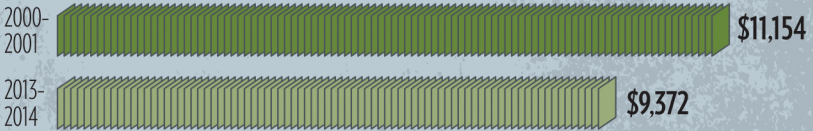


## Number of people living in Hays County (home of San Marcos, the fastest-growing city in the U.S.)

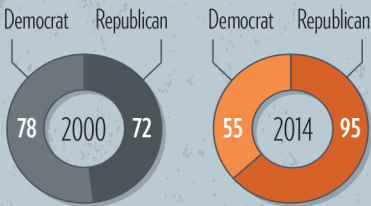
2000 **97,589**

2013 **176,026**

## Amount of money spent per public school student (in 2013 inflation-adjusted dollars)



## Texas House of Representatives, by party affiliation



## Number of producing gas wells

60,486



2000

103,445



2013

## Number of hours the average Houstonian spent in traffic delays annually



## Cumulative number of wind turbines installed

2000 | 116

2014 **10,035**

Sources: United States Census, Texas Education Agency, United States Drought Monitor, Texas Department of State Health Services, Railroad Commission of Texas, Electric Reliability Council of Texas, Wayne Thorburn, Texas A&M Transportation Institute